



THE SUPER **DRAGON** INCINERATOR

**INCINCO**

*The leading name in incineration technology*

## *Company Background*

- Company formed in 1922
- Kiln and incinerator manufacturers
- Strong British skill base
- Expanded to meet market conditions
- International - global market place

*Over 10,000 incinerators supplied and installed worldwide*

## THE SUPER **DRAGON** INCINERATOR

### *Introducing the Super Dragon*

The Super Dragon range of incinerators offers a clean and convenient solution to all your refuse problems.

Available in three sizes, Super Dragons devour 20kg, 40kg and 50kg of waste per hour. Ideal for burning a wide range of materials from garden rubbish to many types of industrial and commercial refuse.

Manufactured from mild steel and easy to assemble, the parts simply sleeve together, the Super Dragon is ready to use in minutes.



**INCINCO**

## THE SUPER **DRAGON** INCINERATOR



Designed for free burning waste it doesn't need oil, gas or electric supplies.

Refractory lined models are available for applications with higher heat outputs such as impregnated paper and wood. Oil or gas fired ignition burners can also be fitted if the waste has a higher than normal water content.

**INCINCO**

## *Maximum Efficiency – Minimum Maintenance*

Waste is manually ignited from the top through the loading door. The flames are fed with primary air from apertures in the grate, the inner combustion chamber and centrally through the air intake cone, stimulating and sustaining fierce primary combustion.

Secondary air is drawn into the incinerator through the isolating space between the outer casing and the inner combustion chamber. This creates an intense secondary combustion for efficient destruction of smoke and gases.

A third stage supply of air enters through the underside of the outercasing to complete the afterburning process.

## *Components and Siting*

The Super Dragon comprises of the base, the inner base, the door section, chimney ashing tools and grate. Outdoor siting is required, a concrete hard standing is recommended.

## *Specification*

Designed to burn type 1 waste: general rubbish, wood off-cuts, waste from commercial or industrial sources.

General waste may often contain small amounts of materials difficult to burn clearly such as vegetables and animal matter.

The Super Dragon incinerator can be expected to handle up to 10% of such waste, providing that they are well mixed with free burning waste such as paper and cardboard.

When loaded within the rated capacities and burning waste for which they are intended - Super Dragons - give efficient combustion, reducing combustible material to a fine ash less than 5% of its original volume.

THE SUPER **DRAGON** INCINERATOR

*Size*

The Super Dragon Incinerator is manufactured in three sizes;

**Super Dragon D20**

burning 20 Kilos of waste per hour

**Super Dragon D40**

burning 40 Kilos of waste per hour

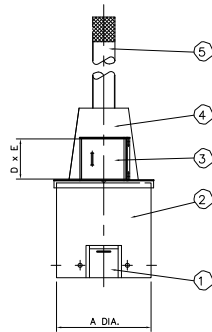
**Super Dragon D50**

burning 50 Kilos of waste per hour

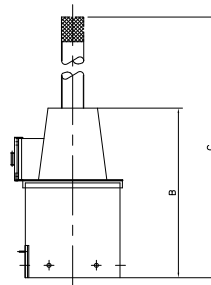


# THE SUPER **DRAGON** INCINERATOR

## Technical

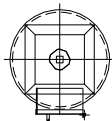


FRONT VIEW



SIDE VIEW

| ITEM | DESCRIPTION                  |
|------|------------------------------|
| 1    | ASHING DOOR                  |
| 2    | COMBUSTION CHAMBER           |
| 3    | FEED DOOR                    |
| 4    | SECONDARY COMBUSTION CHAMBER |
| 5    | CHIMNEY                      |



PLAN VIEW

| MODEL No. | DIMENSIONS (mm) |      |      |     |     | WEIGHTS (kg) |       |
|-----------|-----------------|------|------|-----|-----|--------------|-------|
|           | A               | B    | C    | D   | E   | UNLINED      | LINED |
| D20       | 760             | 1700 | 4000 | 380 | 380 | 400          | 650   |
| D40       | 1060            | 2070 | 4350 | 500 | 500 | 460          | 870   |
| D50       | 1200            | 2070 | 4350 | 500 | 550 | 510          | 975   |

This drawing is the property of INCINCO LIMITED, and is not to be copied, reproduced or divulged without their consent.

**INCINCO**

## *Prices*

### Unlined Units

| MODEL        | PRICE     |
|--------------|-----------|
| <b>SD 20</b> | £3,940.00 |
| <b>SD 40</b> | £4,840.00 |
| <b>SD 50</b> | £5,950.00 |

### Refractory Lined Units

| MODEL              | PRICE     |
|--------------------|-----------|
| <b>SD 20 (RFL)</b> | £4,850.00 |
| <b>SD 40 (RFL)</b> | £5,775.00 |
| <b>SD 50 (RFL)</b> | £6,850.00 |

(Extra cost for oil or gas fired ignition burners upon request if required)

All prices quoted above are ex-works, carriage and V.A.T additional.

THE SUPER **DRAGON** INCINERATOR

*For further information:*

Incinco Ltd  
Unit 1  
113-115 Codicote Road  
Welwyn  
Hertfordshire  
AL6 9TY

Tel: 01438 821000  
Fax: 01438 820888  
Email: [enquires@incinco.com](mailto:enquires@incinco.com)  
[www.incinco.com](http://www.incinco.com)

**INCINCO**



THE SUPER **DRAGON** INCINERATOR

**INCINCO**

*The leading name in incineration technology*